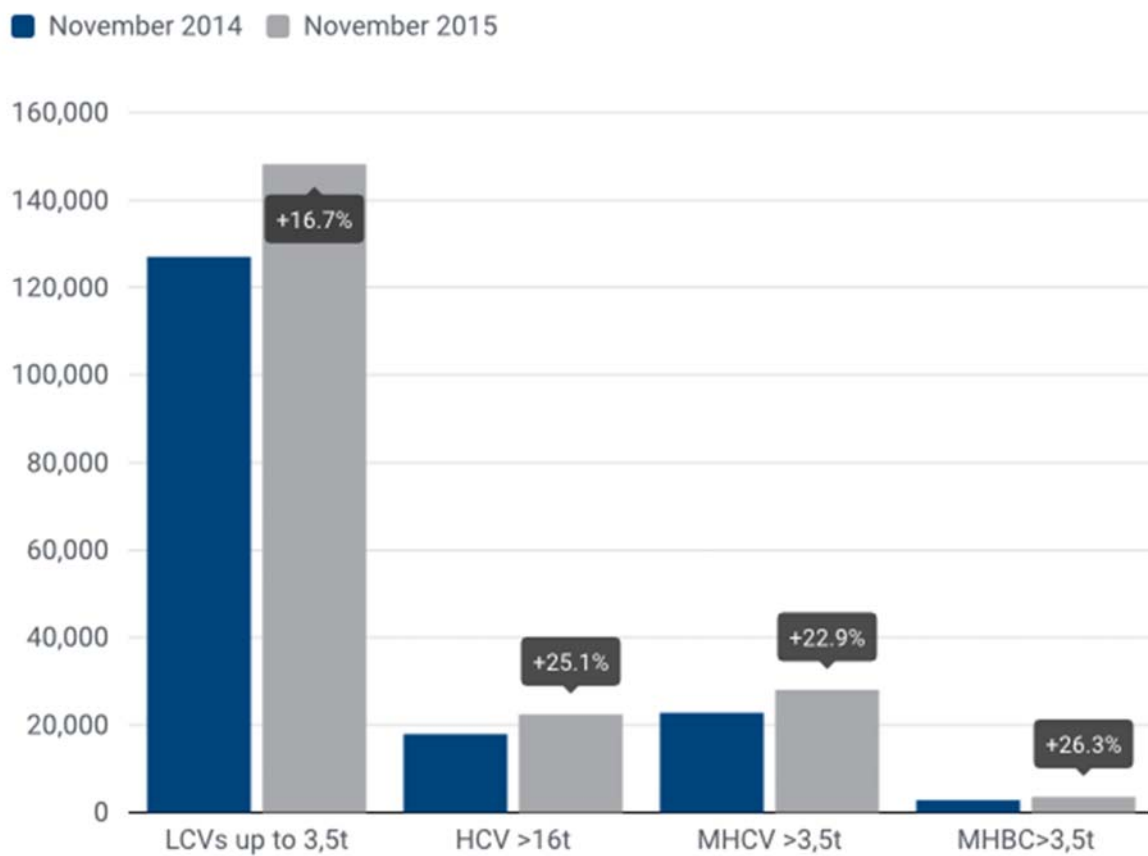


PRESS EMBARGO: 8.00 AM (7.00 AM GMT), 18 December 2015

**NEW COMMERCIAL VEHICLE REGISTRATIONS
EUROPEAN UNION¹**

November 2015



Next press release: Tuesday 26 January 2015

¹ Data for Malta unavailable

Commercial vehicle registrations: +12.2% over eleven months; +17.8% in November

Total new commercial vehicles

In November 2015, demand for new commercial vehicles in the EU increased (+17.8%) for the eleventh consecutive month, totalling 179,930 units. Growth was sustained across all commercial vehicle segments. Spain (+52.2%) and Italy (+28.4%) confirmed the positive momentum by showing significant growth, followed by Germany (+14.9%), the UK (+14.3%) and France (+5.6%).

Over eleven months in 2015, the EU market expanded (+12.2%), totalling 1,887,274 commercial vehicles. During the same period, Spain (+37.9%), the UK (+16.4%), Italy (+11.9%), Germany (+3.9%) and France (+2.4%) all posted growth.

New light commercial vehicles (LCV) up to 3.5 tonnes

In November 2015, new registrations of light commercial vehicles totalled 148,322 units, up (+16.7%) compared to November 2014. This marked the 27th consecutive month of growth in the segment. Spain (+58.7%), Italy (+29.8%), Germany (+17.4%), the UK (+9.6%) and France (+4.4%) all contributed to the upturn.

From January to November 2015, 1,553,344 new vans were registered in the EU (+11.4%). Spain (+37.5%), the UK (+15.7%), Italy (+10.9%), Germany (+4.0%) and France (+1.3%) saw demand for vans increase over this period.

New heavy commercial vehicles (HCV) over 16 tonnes²

November 2015 results show a significant increase in new heavy truck registrations (+25.1%), totalling 22,423 units. The UK (+55.1%), Italy (+31.0%), Spain (+23.0%) and Germany (+12.0%) largely contributed to this positive outcome posting double-digit percentage gains.

Eleven months into the year, the EU market grew (+19.1%), reaching 239,117 units. Spain (+42.1%), the UK (+27.4%), Italy (+26.4%), France (+12.3%) and Germany (+5.1%) saw demand for heavy trucks increase, contributing to the overall upturn of the EU market over the period.

New medium and heavy commercial vehicles (MHCV) over 3.5 tonnes³

In November 2015, 28,013 new trucks were registered in the EU, up (+22.9%) compared to November 2014. The UK market recovered strongly (+68.6%) after showing decline in October. Also Spain (+24.4%), Italy (+24.0%), France (+7.0%) and Germany (+7.0%) positively contributed to the general growth.

From January to November 2015, 298,113 new trucks (+15.6%) were registered in the EU. In particular, Spain (+40.5%), Italy (+21.3%), the UK (+20.7%) and France (+10.0%) posted double-digit growth over the period, followed by Germany (+3.3%) which reported more modest growth.

New medium and heavy buses & coaches (MHBC) over 3.5 tonnes

In November 2015, new bus and coach registrations increased (+26.3%) compared to November 2014, totalling 3,595 units. France (+88.4%), Spain (+20.8%), Germany (+19.6%) and the UK (+7.1%) positively contributed to the overall expansion, while Italy (-23.7%) performed less well than one year ago.

Over eleven months in 2015, the EU market increased (+18.7%), totalling 35,817 new buses and coaches. Demand was primarily driven by Spain (+42.5%), the UK (+26.8%) and France (+23.7%), followed by Italy (+10.4%) and Germany (+8.1%).

² Excluding heavy buses & coaches

³ Excluding buses & coaches

P R E S S R E L E A S E

PRESS EMBARGO FOR ALL DATA :

8.00 AM (7.00 AM GMT), 18 December 2015

PROVISIONAL

EU¹+EFTA COUNTRIES NEW REGISTRATION FIGURES BY MARKET
NEW LIGHT COMMERCIAL VEHICLES up to 3.5²

	November '15	November '14	% Change	Jan-Nov '15	Jan-Nov '14	% Change
AUSTRIA	2,795	2,363	18.3%	30,274	28,923	4.7%
BELGIUM	4,479	3,865	15.9%	56,823	49,512	14.8%
BULGARIA	476	344	38.4%	4,140	3,587	15.4%
CROATIA	623	368	69.3%	6,188	4,935	25.4%
CYPRUS	129	70	84.3%	1,319	1,060	24.4%
CZECH REPUBLIC	1,689	1,203	40.4%	15,209	11,637	30.7%
DENMARK	2,923	2,804	4.2%	29,162	25,464	14.5%
ESTONIA	288	274	5.1%	3,358	2,719	23.5%
FINLAND	963	818	17.7%	10,409	9,740	6.9%
FRANCE	30,736	29,427	4.4%	337,969	333,779	1.3%
GERMANY	24,234	20,637	17.4%	215,475	207,090	4.0%
GREECE	454	339	33.9%	5,079	4,213	20.6%
HUNGARY	1,867	1,614	15.7%	15,220	13,952	9.1%
IRELAND	626	612	2.3%	23,593	16,580	42.3%
ITALY ³	13,000	10,013	29.8%	117,734	106,152	10.9%
LATVIA	234	211	10.9%	2,154	2,238	-3.8%
LITHUANIA	221	156	41.7%	2,148	1,835	17.1%
LUXEMBOURG	386	279	38.4%	3,515	3,088	13.8%
NETHERLANDS	4,777	4,350	9.8%	54,307	49,048	10.7%
POLAND	5,015	3,922	27.9%	46,937	40,407	16.2%
PORTUGAL	3,026	2,536	19.3%	27,130	22,444	20.9%
ROMANIA	1,156	1,078	7.2%	9,779	8,988	8.8%
SLOVAKIA	892	488	82.8%	6,577	5,065	29.9%
SLOVENIA	722	548	31.8%	6,672	6,481	2.9%
SPAIN	13,796	8,693	58.7%	140,456	102,177	37.5%
SWEDEN	3,764	3,566	5.6%	40,297	37,602	7.2%
UNITED KINGDOM	29,051	26,516	9.6%	341,420	295,157	15.7%
EUROPEAN UNION¹	148,322	127,094	16.7%	1,553,344	1,393,873	11.4%
EU15⁴	135,010	116,818	15.6%	1,433,643	1,290,969	11.1%
EU12⁵	13,312	10,276	29.5%	119,701	102,904	16.3%
ICELAND⁶	73	61	19.7%	1,234	775	59.2%
NORWAY	3,032	2,553	18.8%	28,789	26,968	6.8%
SWITZERLAND	2,662	2,441	9.1%	28,410	26,487	7.3%
EFTA	5,767	5,055	14.1%	58,433	54,230	7.8%
EU+EFTA	154,089	132,149	16.6%	1,611,777	1,448,103	11.3%
WESTERN EUROPE (EU15+EFTA)	140,777	121,873	15.5%	1,492,076	1,345,199	10.9%

SOURCE: NATIONAL AUTOMOBILE MANUFACTURERS' ASSOCIATIONS

¹ Data for Malta unavailable

² Including Light Buses & Coaches

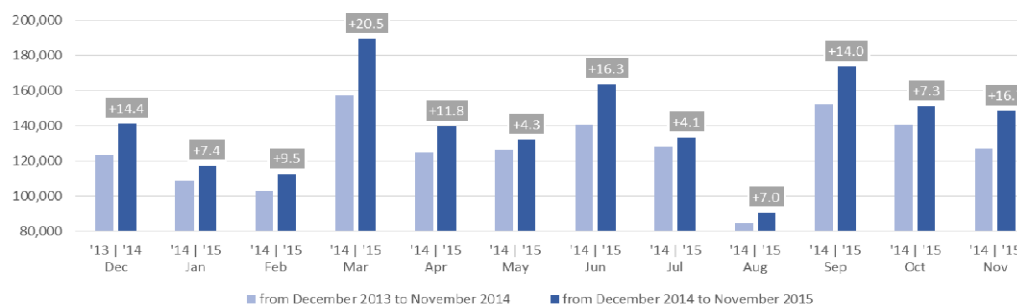
³ ANFIA estimates

⁴ Member States before the 2004 enlargement

⁵ Member States having joined the EU since 2004 (data for Malta unavailable)

⁶ AAA estimates

New light commercial vehicle registrations in the EU - 12 month trend



For further information, please contact: Ms Francesca Piazza - Statistics & Communications Advisor - E-mail: fp@acea.be - Tel. (32) 2 738 73 55

This information is available on the ACEA website: <http://www.acea.be>

Next press release on Commercial Vehicles to be issued on Tuesday 26 January 2016

P R E S S R E L E A S E

PRESS EMBARGO FOR ALL DATA :

8.00 AM (7.00 AM GMT), 18 December 2015

PROVISIONAL

EU¹+EFTA COUNTRIES NEW REGISTRATION FIGURES BY MARKET
NEW HEAVY COMMERCIAL VEHICLES of 16t and over²

18/12/15

	November '15	November '14	% Change	Jan-Nov '15	Jan-Nov '14	% Change
AUSTRIA	476	335	42.1%	6,405	6,054	5.8%
BELGIUM	489	453	7.9%	6,453	5,964	8.2%
BULGARIA	n.a	n.a	n.a	n.a	n.a	n.a
CROATIA	60	67	-10.4%	728	717	1.5%
CYPRUS	0	2	-100.0%	11	9	22.2%
CZECH REPUBLIC ³	854	696	22.7%	8,061	6,920	16.5%
DENMARK	364	240	51.7%	4,065	2,987	36.1%
ESTONIA	83	51	62.7%	687	668	2.8%
FINLAND	143	116	23.3%	1,956	1,788	9.4%
FRANCE	3,186	2,957	7.7%	33,491	29,831	12.3%
GERMANY	4,836	4,319	12.0%	56,868	54,096	5.1%
GREECE	27	7	285.7%	224	187	19.8%
HUNGARY	519	424	22.4%	4,586	3,892	17.8%
IRELAND ⁴	55	29	89.7%	1,483	1,435	3.3%
ITALY ⁵	1,039	793	31.0%	11,041	8,737	26.4%
LATVIA	134	51	162.7%	1,313	913	43.8%
LITHUANIA ⁴	236	125	88.8%	3,399	1,987	71.1%
LUXEMBOURG ⁴	75	45	66.7%	963	873	10.3%
NETHERLANDS	860	868	-0.9%	11,612	8,333	39.3%
POLAND	1,891	1,288	46.8%	18,250	13,801	32.2%
PORTUGAL	355	328	8.2%	2,823	2,088	35.2%
ROMANIA	705	339	108.0%	5,232	3,381	54.7%
SLOVAKIA	277	220	25.9%	3,770	2,963	27.2%
SLOVENIA ⁴	156	114	36.8%	1,595	1,230	29.7%
SPAIN	2,072	1,685	23.0%	17,567	12,362	42.1%
SWEDEN	443	378	17.2%	4,313	4,245	1.6%
UNITED KINGDOM	3,088	1,991	55.1%	32,221	25,288	27.4%
EUROPEAN UNION¹	22,423	17,921	25.1%	239,117	200,749	19.1%
EU15	17,508	14,544	20.4%	191,485	164,268	16.6%
EU12 ¹	4,915	3,377	45.5%	47,632	36,481	30.6%
ICELAND ⁴	8	6	33.3%	106	69	53.6%
NORWAY ⁴	314	320	-1.9%	3,649	3,790	-3.7%
SWITZERLAND ³	241	200	20.5%	2,872	3,111	-7.7%
EFTA	563	526	7.0%	6,627	6,970	-4.9%
EU+EFTA	22,986	18,447	24.6%	245,744	207,719	18.3%
WESTERN EUROPE (EU15+EFTA)	18,071	15,070	19.9%	198,112	171,238	15.7%

SOURCE: NATIONAL AUTOMOBILE MANUFACTURERS' ASSOCIATIONS

¹ Data for Malta unavailable

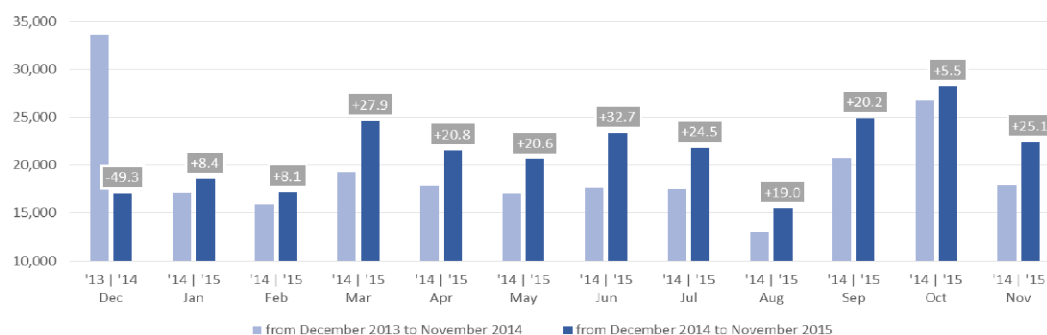
⁴ AAA estimates

² Excluding Heavy Buses & Coaches

⁵ ANFA estimates based on vehicle registration certificates issued by the Italian Ministry of Transport

³ Heavy Commercial Vehicles of 18t and over

New heavy commercial vehicle registrations in the EU - 12 month trend



For further information, please contact: Ms Francesca Piazza - Statistics & Communications Advisor - E-mail: fp@acea.be - Tel. (32) 2 738 73 55

This information is available on the ACEA website: <http://www.acea.be>

PRESS EMBARGO FOR ALL DATA :

8.00 AM (7.00 AM GMT), 18 December 2015

PROVISIONAL

EU¹+EFTA COUNTRIES NEW REGISTRATION FIGURES BY MARKET NEW MEDIUM & HEAVY COMMERCIAL VEHICLES over 3.5t²

18/12/15

	November '15	November '14	% Change	Jan-Nov '15	Jan-Nov '14	% Change
AUSTRIA	519	391	32.7%	6,928	6,526	6.2%
BELGIUM	599	556	7.7%	7,870	7,369	6.8%
BULGARIA	n.a.	n.a.	n.a.	n.a.	n.a.	n.a.
CROATIA	67	70	-4.3%	949	905	4.9%
CYPRUS	0	3	-100.0%	40	23	73.9%
CZECH REPUBLIC	1,041	789	31.9%	9,682	8,313	16.5%
DENMARK	380	271	40.2%	4,425	3,305	33.9%
ESTONIA	86	56	53.6%	740	725	2.1%
FINLAND	187	157	19.1%	2,476	2,348	5.5%
FRANCE	3,651	3,411	7.0%	38,865	35,323	10.0%
GERMANY	7,446	6,959	7.0%	82,688	80,065	3.3%
GREECE	31	8	287.5%	400	318	25.8%
HUNGARY	562	451	24.6%	4,972	4,252	16.9%
IRELAND	76	31	145.2%	1,853	1,771	4.6%
ITALY ³	1,287	1,038	24.0%	14,113	11,635	21.3%
LATVIA	137	59	132.2%	1,387	992	39.8%
LITHUANIA ⁴	243	137	77.4%	3,497	2,113	65.5%
LUXEMBOURG	84	48	75.0%	1,025	963	6.4%
NETHERLANDS	996	966	3.1%	12,910	9,360	37.9%
POLAND	2,072	1,548	33.9%	20,202	15,942	26.7%
PORTUGAL	467	428	9.1%	3,619	2,719	33.1%
ROMANIA	728	354	105.6%	5,480	3,624	51.2%
SLOVAKIA	319	243	31.3%	3,860	3,051	26.5%
SLOVENIA ⁴	170	128	32.8%	1,741	1,360	28.0%
SPAIN	2,347	1,887	24.4%	20,496	14,591	40.5%
SWEDEN	528	435	21.4%	4,881	4,708	3.7%
UNITED KINGDOM	3,990	2,366	68.6%	43,014	35,634	20.7%
EUROPEAN UNION¹	28,013	22,790	22.9%	298,113	257,935	15.6%
EU15	22,588	18,952	19.2%	245,563	216,635	13.4%
EU12¹	5,425	3,838	41.3%	52,550	41,300	27.2%
ICELAND⁴	10	12	-16.7%	189	115	64.3%
NORWAY	406	378	7.4%	4,930	5,058	-2.5%
SWITZERLAND	319	261	22.2%	3,662	3,931	-6.8%
EFTA	735	651	12.9%	8,781	9,104	-3.5%
EU+EFTA	28,748	23,441	22.6%	306,894	267,039	14.9%
WESTERN EUROPE (EU15+EFTA)	23,323	19,603	19.0%	254,344	225,739	12.7%

SOURCE: NATIONAL AUTOMOBILE MANUFACTURERS' ASSOCIATIONS

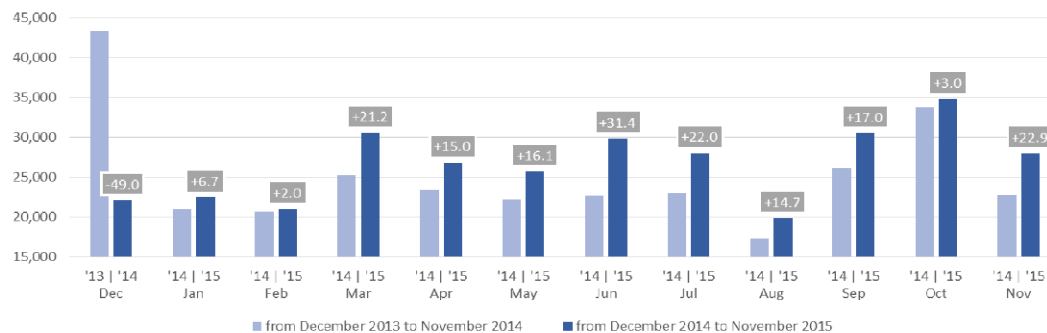
¹ Data for Malta unavailable

³ ANFIA estimates based on vehicle registration certificates issued by the Italian Ministry of Transport

² Excluding total Buses & Coaches over 3.5t

⁴ AAA estimates

New medium and heavy commercial vehicle registrations in the EU - 12 month trend



P R E S S R E L E A S E

PRESS EMBARGO FOR ALL DATA :

8.00 AM (7.00 AM GMT), 18 December 2015

PROVISIONAL

EU¹+EFTA COUNTRIES NEW REGISTRATION FIGURES BY MARKET
NEW MEDIUM & HEAVY BUSES & COACHES over 3.5t

18/12/15

	November '15	November '14	% Change	Jan-Nov '15	Jan-Nov '14	% Change
AUSTRIA	87	91	-4.4%	801	801	0.0%
BELGIUM	84	70	20.0%	892	1,041	-14.3%
BULGARIA	n.a.	n.a.	n.a.	n.a.	n.a.	n.a.
CROATIA	9	2	350.0%	116	93	24.7%
CYPRUS	n.a.	n.a.	n.a.	n.a.	n.a.	n.a.
CZECH REPUBLIC	226	132	71.2%	1,180	827	42.7%
DENMARK	108	76	42.1%	452	438	3.2%
ESTONIA	14	32	-56.3%	196	151	29.8%
FINLAND	27	33	-18.2%	489	661	-26.0%
FRANCE	682	362	88.4%	6,612	5,345	23.7%
GERMANY	749	626	19.6%	5,210	4,820	8.1%
GREECE	8	4	100.0%	121	169	-28.4%
HUNGARY	48	35	37.1%	452	344	31.4%
IRELAND	0	11	-100.0%	281	206	36.4%
ITALY ²	142	186	-23.7%	2,236	2,025	10.4%
LATVIA	2	22	-90.9%	202	182	11.0%
LITHUANIA ³	11	29	-62.1%	194	260	-25.4%
LUXEMBOURG	3	8	-62.5%	249	151	64.9%
NETHERLANDS	5	33	-84.8%	319	396	-19.4%
POLAND	209	103	102.9%	1,527	1,312	16.4%
PORTUGAL	11	15	-26.7%	243	218	11.5%
ROMANIA	126	101	24.8%	2,181	1,102	97.9%
SLOVAKIA	55	47	17.0%	282	352	-19.9%
SLOVENIA ³	17	11	54.5%	149	164	-9.1%
SPAIN	157	130	20.8%	2,382	1,671	42.5%
SWEDEN	178	93	91.4%	1,162	1,232	-5.7%
UNITED KINGDOM	637	595	7.1%	7,889	6,221	26.8%
EUROPEAN UNION¹	3,595	2,847	26.3%	35,817	30,182	18.7%
EU15	2,878	2,333	23.4%	29,338	25,395	15.5%
EU12¹	717	514	39.5%	6,479	4,787	35.3%
ICELAND³	1	0		94	63	49.2%
NORWAY	48	54	-11.1%	776	852	-8.9%
SWITZERLAND	97	70	38.6%	658	555	18.6%
EFTA	146	124	17.7%	1,528	1,470	3.9%
EU+EFTA	3,741	2,971	25.9%	37,345	31,652	18.0%
WESTERN EUROPE (EU15+EFTA)	3,024	2,457	23.1%	30,866	26,865	14.9%

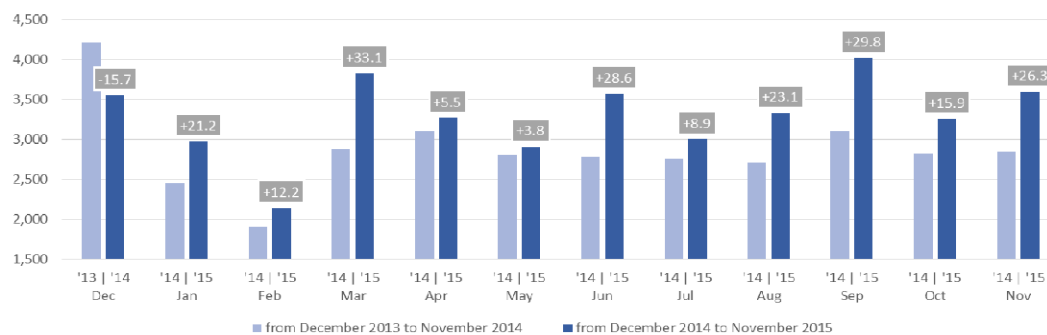
SOURCE: NATIONAL AUTOMOBILE MANUFACTURERS' ASSOCIATIONS

¹ Data for Malta unavailable

² ANFIA estimates based on vehicle registration certificates issued by the Italian Ministry of Transport

³ AAA estimates

New medium and heavy buses & coaches registrations in the EU - 12 month trend



For further information, please contact: Ms Francesca Piazza - Statistics & Communications Advisor - E-mail: fp@acea.be - Tel. (32) 2 738 73 55

This information is available on the ACEA website: <http://www.acea.be>

P R E S S R E L E A S E

PRESS EMBARGO FOR ALL DATA :

8.00 AM (7.00 AM GMT), 18 December 2015

PROVISIONAL EU¹+EFTA COUNTRIES NEW REGISTRATION FIGURES BY MARKET TOTAL NEW COMMERCIAL VEHICLES²

18/12/15

	November '15	November '14	% Change	Jan-Nov '15	Jan-Nov '14	% Change
AUSTRIA	3,401	2,845	19.5%	38,003	36,250	4.8%
BELGIUM	5,162	4,491	14.9%	65,585	57,922	13.2%
BULGARIA ³	476	344	38.4%	4,140	3,587	15.4%
CROATIA	699	440	58.9%	7,253	5,933	22.2%
CYPRUS ⁴	129	73	76.7%	1,359	1,083	25.5%
CZECH REPUBLIC	2,956	2,124	39.2%	26,071	20,777	25.5%
DENMARK	3,411	3,151	8.3%	34,039	29,207	16.5%
ESTONIA	388	362	7.2%	4,294	3,595	19.4%
FINLAND	1,177	1,008	16.8%	13,374	12,749	4.9%
FRANCE	35,069	33,200	5.6%	383,446	374,447	2.4%
GERMANY	32,429	28,222	14.9%	303,373	291,975	3.9%
GREECE	493	351	40.5%	5,600	4,700	19.1%
HUNGARY	2,477	2,100	18.0%	20,644	18,548	11.3%
IRELAND	702	654	7.3%	25,727	18,557	38.6%
ITALY ⁵	14,429	11,237	28.4%	134,083	119,812	11.9%
LATVIA	373	292	27.7%	3,743	3,412	9.7%
LITHUANIA	475	322	47.5%	5,839	4,208	38.8%
LUXEMBOURG	473	335	41.2%	4,789	4,202	14.0%
NETHERLANDS	5,778	5,349	8.0%	67,536	58,804	14.8%
POLAND	7,296	5,573	30.9%	68,666	57,661	19.1%
PORTUGAL	3,504	2,979	17.6%	30,992	25,381	22.1%
ROMANIA	2,010	1,533	31.1%	17,440	13,714	27.2%
SLOVAKIA	1,266	778	62.7%	10,719	8,468	26.6%
SLOVENIA	909	687	32.3%	8,562	8,005	7.0%
SPAIN	16,300	10,710	52.2%	163,334	118,439	37.9%
SWEDEN	4,470	4,094	9.2%	46,340	43,542	6.4%
UNITED KINGDOM	33,678	29,477	14.3%	392,323	337,012	16.4%
EUROPEAN UNION¹	179,930	152,731	17.8%	1,887,274	1,681,990	12.2%
EU15	160,476	138,103	16.2%	1,708,544	1,532,999	11.5%
EU12¹	19,454	14,628	33.0%	178,730	148,991	20.0%
ICELAND	84	73	15.1%	1,517	953	59.2%
NORWAY	3,486	2,985	16.8%	34,495	32,878	4.9%
SWITZERLAND	3,078	2,772	11.0%	32,730	30,973	5.7%
EFTA	6,648	5,830	14.0%	68,742	64,804	6.1%
EU+EFTA	186,578	158,561	17.7%	1,956,016	1,746,794	12.0%
WESTERN EUROPE (EU15+EFTA)	167,124	143,933	16.1%	1,777,286	1,597,803	11.2%

SOURCE: NATIONAL AUTOMOBILE MANUFACTURERS' ASSOCIATIONS

¹ Data for Malta unavailable

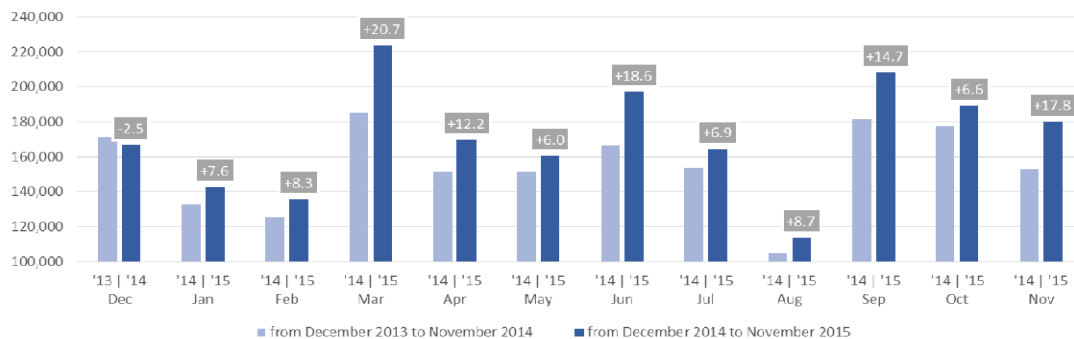
⁴ Data for Buses & Coaches unavailable

² Total Light, Medium & Heavy Commercial Vehicles and Buses & Coaches

⁵ ANFIA estimates based on vehicle registration certificates issued by the Italian Ministry of Transport

³ Data for Medium & Heavy Commercial Vehicles and Buses & Coaches unavailable

Total new commercial vehicle registrations in the EU - 12 month trend



For further information, please contact: Ms Francesca Piazza - Statistics & Communications Advisor - E-mail: fp@acea.be - Tel. (32) 2 738 73 55

This information is available on the ACEA website: <http://www.acea.be>