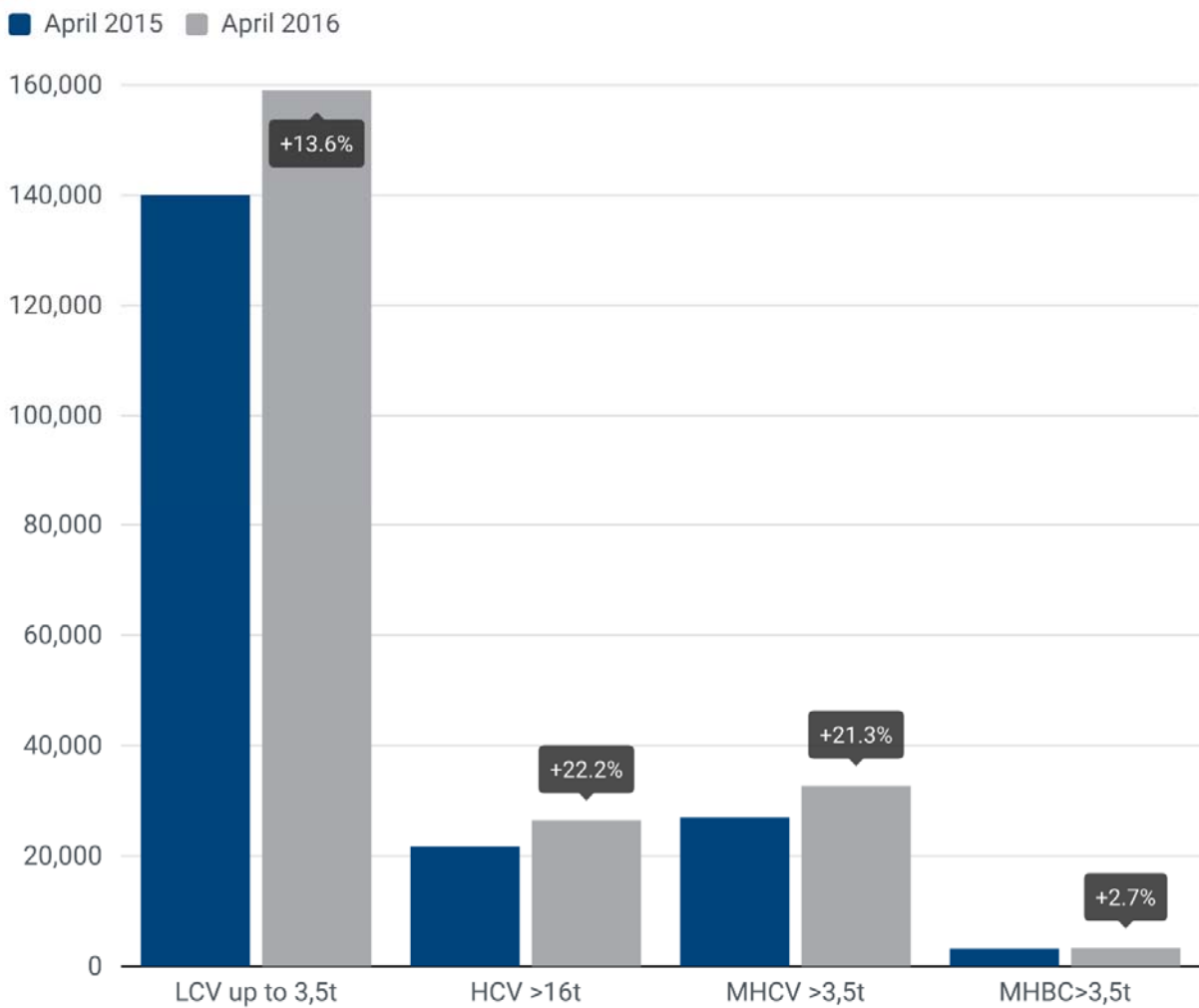


**PRESS EMBARGO: 8.00 AM (6.00 AM GMT), 25 May 2016**

**NEW COMMERCIAL VEHICLE REGISTRATIONS  
EUROPEAN UNION<sup>1</sup>  
April 2016**



**Next Press Release: Thursday 23 June 2016**

<sup>1</sup> Data for Malta unavailable

## Commercial vehicle registrations: +12.8% first four months of 2016; +14.6% in April

### Total new commercial vehicles

**In April 2016**, demand for new commercial vehicles in the EU increased for the 16<sup>th</sup> consecutive month. Total commercial vehicle registrations grew by 14.6%, totalling 195,013 units. Growth was sustained across all segments of commercial vehicles. Looking at the largest markets, Italy recorded the highest upturn (+32.5%) followed closely by Spain (+19.5%), Germany (+12.3%) and the UK (+11.2%).

**In the first four months of the year**, the EU market expanded by 12.8%, totalling 758,566 commercial vehicles. During that period, Italy (+29.2%), Spain (+12.9%), France (+10.1%), Germany (+10.0%) and the UK (+4.1%) all posted growth.

### New light commercial vehicles (LCV) up to 3.5 tonnes<sup>2</sup>

**In April 2016**, new registrations of light commercial vehicles totalled 159,012 units, or 13.6% more than in April 2015. This marked the 32<sup>nd</sup> consecutive month of growth in the segment, which accounts for the majority of sales in the commercial vehicle market. Italy (+30.8%), Spain (+18.0%), the UK (+11.8%), Germany (+9.1%) and France (+8.9%) all contributed positively to the upturn.

**From January to April 2016**, 625,898 new vans were registered in the EU, 11.8% more than in the same period last year. All major markets saw their demand for vans increase over this period.

### New heavy commercial vehicles (HCV) over 16 tonnes<sup>3</sup>

**April 2016** results again show a double-digit increase (+22.2%) in the heavy truck segment, totalling 26,457 new registrations. This positive outcome was largely sustained by the notable growth recorded in Italy (+70.4%), Spain (+32.4%), Germany (+23.3%) and France (+18.4%) also posted significant growth.

**Four months into the year**, the EU market grew by 19.6%, reaching 98,397 units. All major markets saw their demand for heavy trucks increase: Italy (+28.6%), Spain (+24.6%), France (+17.3%), Germany (+12.1%) and the UK (+10.9%).

### New medium and heavy commercial vehicles (MHCV) over 3.5 tonnes<sup>4</sup>

**In April 2016**, results for trucks were similar to the heavy truck segment, with Italy (+61.0%), Spain (+36.7%), Germany (+20.7%) and France (+17.7%) posting double-digit gains. Overall, 32,706 new trucks were registered in the EU, 21.3% more than in April 2015.

**From January to April 2016**, 120,330 new trucks were registered in the EU, 19.0% more than in the same period last year. All major markets posted significant growth, especially Spain (+27.8%) and Italy (+27.4%).

### New medium and heavy buses & coaches (MHBC) over 3.5 tonnes

**In April 2016**, new buses and coaches registrations increased (+2.7%) compared to April 2015, totalling 3,295 units. Growth was mainly sustained by the German (+14.2%) and UK (+7.8%) markets, while Italy (-11.9%), France (-6.9%) and Spain (-2.8%) performed less well than in April 2015.

**Four months into 2016**, the EU bus and coach market increased by 3.5%, reaching 12,338 units. Demand declined in the UK (-8.3%) and Italy (-12.7%), while new registrations grew in Germany (+13.1%), France (+6.9%) and Spain (+3.7%).

---

<sup>2</sup> Including light buses and coaches

<sup>3</sup> Excluding heavy buses and coaches

<sup>4</sup> Excluding buses and coaches

# P R E S S   R E L E A S E

**PRESS EMBARGO FOR ALL DATA :**

**8.00 AM (6.00 AM GMT), 25 May 2016**

## PROVISIONAL

EU+EFTA<sup>1</sup> COUNTRIES NEW REGISTRATION FIGURES BY MARKET  
NEW LIGHT COMMERCIAL VEHICLES up to 3.5t<sup>2</sup>

25/05/16

	April '16	April '15	% Change	Jan-Apr '16	Jan-Apr '15	% Change
AUSTRIA	3,340	3,142	6.3%	12,028	10,460	15.0%
BELGIUM	6,075	6,257	-2.9%	24,623	23,167	6.3%
BULGARIA	369	320	15.3%	1,526	1,436	6.3%
CROATIA	679	638	6.4%	2,415	2,083	15.9%
CYPRUS	109	96	13.5%	501	338	48.2%
CZECH REPUBLIC	1,550	1,417	9.4%	5,718	5,478	4.4%
DENMARK	3,193	2,668	19.7%	12,073	10,269	17.6%
ESTONIA	350	322	8.7%	1,308	1,286	1.7%
FINLAND	1,188	961	23.6%	4,418	3,906	13.1%
FRANCE	36,037	33,086	8.9%	135,676	124,037	9.4%
GERMANY	22,031	20,202	9.1%	80,065	73,278	9.3%
GREECE	535	568	-5.8%	1,650	2,480	-33.5%
HUNGARY	1,802	1,336	34.9%	6,541	5,503	18.9%
IRELAND	2,305	2,078	10.9%	15,722	12,153	29.4%
ITALY	14,250	10,891	30.8%	53,746	41,210	30.4%
LATVIA	184	214	-14.0%	694	750	-7.5%
LITHUANIA	286	155	84.5%	964	733	31.5%
LUXEMBOURG	368	311	18.3%	1,488	1,220	22.0%
NETHERLANDS	5,971	4,618	29.3%	27,312	21,493	27.1%
POLAND	5,310	4,028	31.8%	19,259	15,914	21.0%
PORTUGAL	2,594	2,394	8.4%	10,661	9,082	17.4%
ROMANIA	1,158	806	43.7%	4,420	3,121	41.6%
SLOVAKIA	614	648	-5.2%	2,395	2,098	14.2%
SLOVENIA	854	628	36.0%	3,354	2,329	44.0%
SPAIN	15,256	12,933	18.0%	54,126	48,639	11.3%
SWEDEN	4,724	4,375	8.0%	16,429	14,456	13.6%
UNITED KINGDOM	27,880	24,927	11.8%	126,786	122,702	3.3%
<b>EUROPEAN UNION</b>	<b>159,012</b>	<b>140,019</b>	<b>13.6%</b>	<b>625,898</b>	<b>559,621</b>	<b>11.8%</b>
EU15 <sup>3</sup>	145,747	129,411	12.6%	576,803	518,552	11.2%
EU12 <sup>4</sup>	13,265	10,608	25.0%	49,095	41,069	19.5%
ICELAND	210	139	51.1%	642	417	54.0%
NORWAY	3,121	2,887	8.1%	10,274	10,493	-2.1%
SWITZERLAND	2,884	2,584	11.6%	10,393	10,281	1.1%
EFTA	6,215	5,610	10.8%	21,309	21,191	0.6%
<b>EU+EFTA</b>	<b>165,227</b>	<b>145,629</b>	<b>13.5%</b>	<b>647,207</b>	<b>580,812</b>	<b>11.4%</b>
<b>WESTERN EUROPE (EU15+EFTA)</b>	<b>151,962</b>	<b>135,021</b>	<b>12.5%</b>	<b>598,112</b>	<b>539,743</b>	<b>10.8%</b>

SOURCE: NATIONAL AUTOMOBILE MANUFACTURERS' ASSOCIATIONS

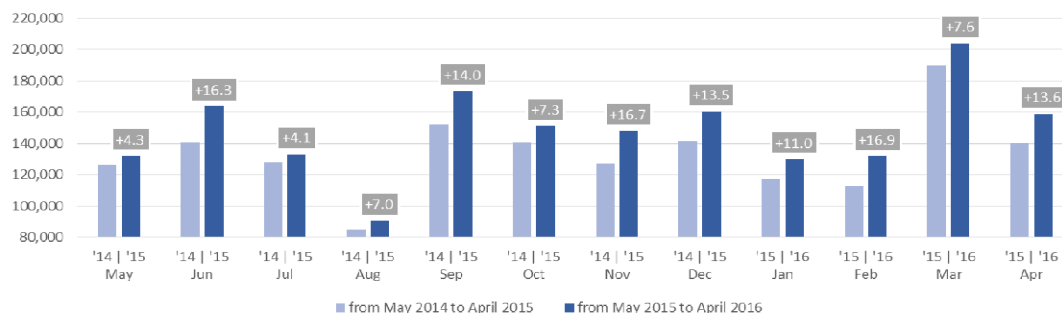
<sup>1</sup> Data for Malta unavailable

<sup>2</sup> Including Light Buses & Coaches

<sup>3</sup> Member States before the 2004 enlargement

<sup>4</sup> Member States having joined the EU since 2004 (data for Malta unavailable)

### New light commercial vehicle registrations in the EU - 12 month trend



For further information, please contact: Ms Francesca Piazza - Statistics Manager - E-mail: fp@acea.be - Tel. (32) 2 738 73 55

This information is available on the ACEA website: <http://www.acea.be>  
Next press release on Commercial Vehicles to be issued on Thursday 23 June 2016

# P R E S S   R E L E A S E

**PRESS EMBARGO FOR ALL DATA :**

**8.00 AM (6.00 AM GMT), 25 May 2016**

## PROVISIONAL

### EU+EFTA<sup>1</sup> COUNTRIES NEW REGISTRATION FIGURES BY MARKET NEW HEAVY COMMERCIAL VEHICLES of 16t and over<sup>2</sup>

25/05/16

	April '16	April '15	% Change	Jan-Apr '16	Jan-Apr '15	% Change
AUSTRIA	771	700	10.1%	2,688	2,511	7.0%
BELGIUM	779	537	45.1%	3,081	2,385	29.2%
BULGARIA	n.a	n.a	n.a	n.a	n.a	n.a
CROATIA	95	55	72.7%	399	243	64.2%
CYPRUS	2	0		11	9	22.2%
CZECH REPUBLIC <sup>3</sup>	891	769	15.9%	3,198	2,752	16.2%
DENMARK	397	397	0.0%	1,507	1,435	5.0%
ESTONIA	74	54	37.0%	337	272	23.9%
FINLAND	223	192	16.1%	851	647	31.5%
FRANCE	3,909	3,301	18.4%	14,006	11,942	17.3%
GERMANY	6,738	5,463	23.3%	22,771	20,305	12.1%
GREECE	23	18	27.8%	94	72	30.6%
HUNGARY	421	318	32.4%	1,563	1,727	-9.5%
IRELAND <sup>4</sup>	183	180	1.7%	991	657	50.8%
ITALY <sup>5</sup>	1,351	793	70.4%	4,997	3,885	28.6%
LATVIA	104	149	-30.2%	442	428	3.3%
LITHUANIA <sup>4</sup>	277	267	3.7%	1,782	995	79.1%
LUXEMBOURG <sup>4</sup>	98	105	-6.7%	477	349	36.7%
NETHERLANDS	1,380	1,150	20.0%	5,952	4,797	24.1%
POLAND	2,135	1,615	32.2%	8,009	5,713	40.2%
PORTUGAL	243	196	24.0%	1,200	899	33.5%
ROMANIA	656	428	53.3%	2,468	1,558	58.4%
SLOVAKIA	428	348	23.0%	1,438	1,425	0.9%
SLOVENIA <sup>4</sup>	165	151	9.3%	763	571	33.6%
SPAIN	1,602	1,210	32.4%	6,351	5,098	24.6%
SWEDEN	638	493	29.4%	1,866	1,523	22.5%
UNITED KINGDOM <sup>4</sup>	2,874	2,764	4.0%	11,155	10,059	10.9%
<b>EUROPEAN UNION</b>	<b>26,457</b>	<b>21,653</b>	<b>22.2%</b>	<b>98,397</b>	<b>82,257</b>	<b>19.6%</b>
EU15	21,209	17,499	21.2%	77,987	66,564	17.2%
EU12	5,248	4,154	26.3%	20,410	15,693	30.1%
ICELAND	27	8	237.5%	57	32	78.1%
NORWAY <sup>4</sup>	328	336	-2.4%	1,321	1,299	1.7%
SWITZERLAND <sup>3</sup>	271	299	-9.4%	1,105	1,050	5.2%
EFTA	626	643	-2.6%	2,483	2,381	4.3%
<b>EU+EFTA</b>	<b>27,083</b>	<b>22,296</b>	<b>21.5%</b>	<b>100,880</b>	<b>84,638</b>	<b>19.2%</b>
<b>WESTERN EUROPE (EU15+EFTA)</b>	<b>21,835</b>	<b>18,142</b>	<b>20.4%</b>	<b>80,470</b>	<b>68,945</b>	<b>16.7%</b>

SOURCE: NATIONAL AUTOMOBILE MANUFACTURERS' ASSOCIATIONS

<sup>1</sup> Data for Malta unavailable

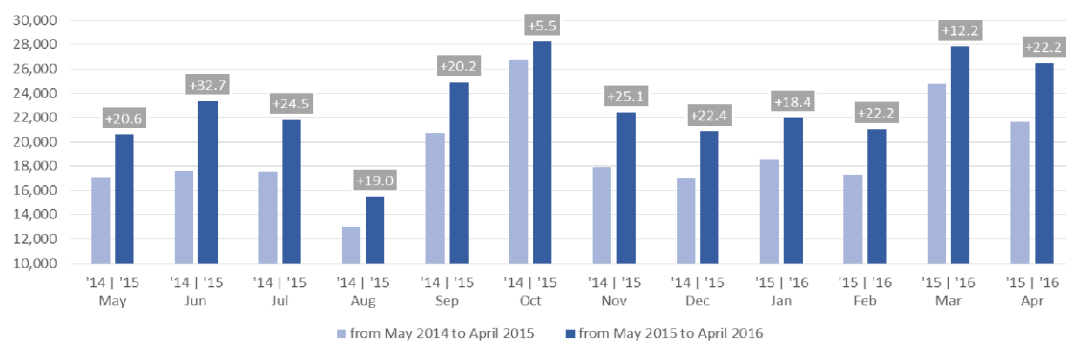
<sup>4</sup> AAA estimates

<sup>2</sup> Excluding Heavy Buses & Coaches

<sup>5</sup> ANFIA estimates based on vehicle registration certificates issued by the Italian Ministry of Transport

<sup>3</sup> Heavy Commercial Vehicles of 18t and over

### New heavy commercial vehicle registrations in the EU - 12 month trend



For further information, please contact: Ms Francesca Piazza - Statistics Manager - E-mail: fp@acea.be - Tel. (32) 2 738 73 55

This information is available on the ACEA website: <http://www.acea.be>

# P R E S S   R E L E A S E

**PRESS EMBARGO FOR ALL DATA :**

**8.00 AM (6.00 AM GMT), 25 May 2016**

## PROVISIONAL

### EU+EFTA<sup>1</sup> COUNTRIES NEW REGISTRATION FIGURES BY MARKET NEW MEDIUM & HEAVY COMMERCIAL VEHICLES over 3.5t<sup>2</sup>

25/05/16

	April '16	April '15	% Change	Jan-Apr '16	Jan-Apr '15	% Change
AUSTRIA	812	748	8.6%	2,862	2,687	6.5%
BELGIUM	929	698	33.1%	3,655	2,937	24.4%
BULGARIA	n.a.	n.a.	n.a.	n.a.	n.a.	n.a.
CROATIA	125	76	64.5%	467	319	46.4%
CYPRUS	3	4	-25.0%	14	18	-22.2%
CZECH REPUBLIC	1,101	926	18.9%	3,851	3,312	16.3%
DENMARK	444	448	-0.9%	1,695	1,594	6.3%
ESTONIA	78	62	25.8%	354	292	21.2%
FINLAND	278	249	11.6%	1,066	839	27.1%
FRANCE	4,600	3,909	17.7%	16,313	13,992	16.6%
GERMANY	9,267	7,676	20.7%	31,497	28,151	11.9%
GREECE	41	26	57.7%	139	123	13.0%
HUNGARY	469	362	29.6%	1,700	1,846	-7.9%
IRELAND	251	199	26.1%	1,193	745	60.1%
ITALY <sup>3</sup>	1,724	1,071	61.0%	6,292	4,938	27.4%
LATVIA	107	161	-33.5%	456	454	0.4%
LITHUANIA <sup>4</sup>	278	271	2.6%	1,803	1,012	78.2%
LUXEMBOURG	98	105	-6.7%	477	364	31.0%
NETHERLANDS	1,536	1,262	21.7%	6,512	5,290	23.1%
POLAND	2,339	1,803	29.7%	8,636	6,334	36.3%
PORTUGAL	298	257	16.0%	1,427	1,090	30.9%
ROMANIA	683	451	51.4%	2,593	1,632	58.9%
SLOVAKIA	484	378	28.0%	1,624	1,522	6.7%
SLOVENIA <sup>4</sup>	176	164	7.3%	816	629	29.7%
SPAIN	1,994	1,459	36.7%	7,715	6,036	27.8%
SWEDEN	690	556	24.1%	2,056	1,713	20.0%
UNITED KINGDOM <sup>4</sup>	3,901	3,632	7.4%	15,117	13,291	13.7%
<b>EUROPEAN UNION</b>	<b>32,706</b>	<b>26,953</b>	<b>21.3%</b>	<b>120,330</b>	<b>101,160</b>	<b>19.0%</b>
EU15	26,863	22,295	20.5%	98,016	83,790	17.0%
EU12	5,843	4,658	25.4%	22,314	17,370	28.5%
ICELAND	38	17	123.5%	102	59	72.9%
NORWAY	595	483	23.2%	1,842	1,683	9.4%
SWITZERLAND	355	368	-3.5%	1,379	1,312	5.1%
EFTA	988	868	13.8%	3,323	3,054	8.8%
<b>EU+EFTA</b>	<b>33,694</b>	<b>27,821</b>	<b>21.1%</b>	<b>123,653</b>	<b>104,214</b>	<b>18.7%</b>
<b>WESTERN EUROPE (EU15+EFTA)</b>	<b>27,851</b>	<b>23,163</b>	<b>20.2%</b>	<b>101,339</b>	<b>86,844</b>	<b>16.7%</b>

SOURCE: NATIONAL AUTOMOBILE MANUFACTURERS' ASSOCIATIONS

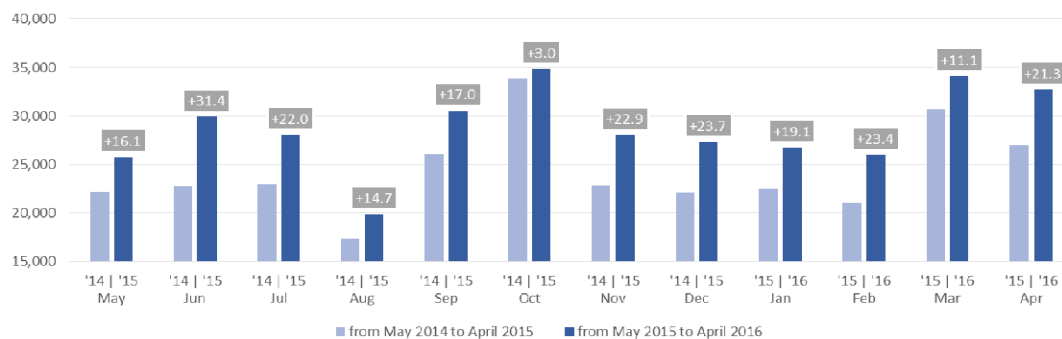
<sup>1</sup> Data for Malta unavailable

<sup>3</sup> ANFIA estimates based on vehicle registration certificates issued by the Italian Ministry of Transport

<sup>2</sup> Excluding total Buses & Coaches over 3.5t

<sup>4</sup> AAA estimates

### New medium and heavy commercial vehicle registrations in the EU - 12 month trend



For further information, please contact: Ms Francesca Piazza - Statistics Manager - E-mail: fp@acea.be - Tel. (32) 2 738 73 55

This information is available on the ACEA website: <http://www.acea.be>

# P R E S S   R E L E A S E

**PRESS EMBARGO FOR ALL DATA :**

**8.00 AM (6.00 AM GMT), 25 May 2016**

## PROVISIONAL

EU+EFTA<sup>1</sup> COUNTRIES NEW REGISTRATION FIGURES BY MARKET  
NEW MEDIUM & HEAVY BUSES & COACHES over 3.5t

25/05/16

	April '16	April '15	% Change	Jan-Apr '16	Jan-Apr '15	% Change
AUSTRIA	91	98	-7.1%	454	341	33.1%
BELGIUM	85	148	-42.6%	300	410	-26.8%
BULGARIA	n.a.	n.a.	n.a.	n.a.	n.a.	n.a.
CROATIA	20	29	-31.0%	77	60	28.3%
CYPRUS	n.a.	n.a.	n.a.	n.a.	n.a.	n.a.
CZECH REPUBLIC	114	131	-13.0%	313	366	-14.5%
DENMARK	27	14	92.9%	131	89	47.2%
ESTONIA	37	22	68.2%	111	86	29.1%
FINLAND	37	27	37.0%	119	127	-6.3%
FRANCE	457	491	-6.9%	2,072	1,938	6.9%
GERMANY	621	544	14.2%	2,070	1,830	13.1%
GREECE	21	15	40.0%	53	38	39.5%
HUNGARY	27	45	-40.0%	168	118	42.4%
IRELAND	63	29	117.2%	186	136	36.8%
ITALY <sup>2</sup>	238	270	-11.9%	881	1,009	-12.7%
LATVIA	14	41	-65.9%	37	105	-64.8%
LITHUANIA <sup>3</sup>	13	6	116.7%	56	58	-3.4%
LUXEMBOURG	30	23	30.4%	86	119	-27.7%
NETHERLANDS	87	58	50.0%	219	162	35.2%
POLAND	152	169	-10.1%	664	547	21.4%
PORTUGAL	41	17	141.2%	224	133	68.4%
ROMANIA	94	89	5.6%	341	277	23.1%
SLOVAKIA	54	23	134.8%	112	102	9.8%
SLOVENIA <sup>3</sup>	24	25	-4.0%	76	57	33.3%
SPAIN	207	213	-2.8%	974	939	3.7%
SWEDEN	78	65	20.0%	220	262	-16.0%
UNITED KINGDOM <sup>3</sup>	663	615	7.8%	2,394	2,610	-8.3%
<b>EUROPEAN UNION</b>	<b>3,295</b>	<b>3,207</b>	<b>2.7%</b>	<b>12,338</b>	<b>11,919</b>	<b>3.5%</b>
<b>EU15</b>	<b>2,746</b>	<b>2,627</b>	<b>4.5%</b>	<b>10,383</b>	<b>10,143</b>	<b>2.4%</b>
<b>EU12</b>	<b>549</b>	<b>580</b>	<b>-5.3%</b>	<b>1,955</b>	<b>1,776</b>	<b>10.1%</b>
<b>ICELAND</b>	<b>12</b>	<b>9</b>	<b>33.3%</b>	<b>49</b>	<b>30</b>	<b>63.3%</b>
<b>NORWAY</b>	<b>59</b>	<b>32</b>	<b>84.4%</b>	<b>215</b>	<b>196</b>	<b>9.7%</b>
<b>SWITZERLAND</b>	<b>53</b>	<b>60</b>	<b>-11.7%</b>	<b>141</b>	<b>183</b>	<b>-23.0%</b>
<b>EFTA</b>	<b>124</b>	<b>101</b>	<b>22.8%</b>	<b>405</b>	<b>409</b>	<b>-1.0%</b>
<b>EU+EFTA</b>	<b>3,419</b>	<b>3,308</b>	<b>3.4%</b>	<b>12,743</b>	<b>12,328</b>	<b>3.4%</b>
<b>WESTERN EUROPE (EU15+EFTA)</b>	<b>2,870</b>	<b>2,728</b>	<b>5.2%</b>	<b>10,788</b>	<b>10,552</b>	<b>2.2%</b>

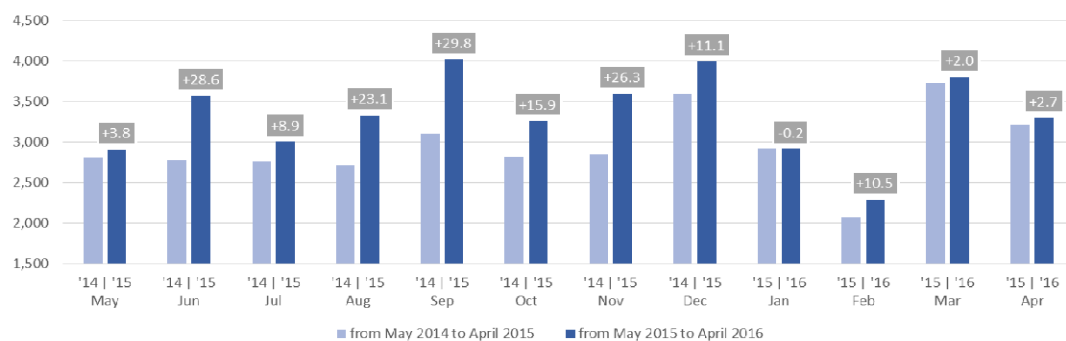
SOURCE: NATIONAL AUTOMOBILE MANUFACTURERS' ASSOCIATIONS

<sup>1</sup> Data for Malta unavailable

<sup>2</sup> ANFIA estimates based on vehicle registration certificates issued by the Italian Ministry of Transport

<sup>3</sup> AAA estimates

### New medium and heavy buses & coaches registrations in the EU - 12 month trend



For further information, please contact: Ms Francesca Piazza - Statistics Manager - E-mail: fp@acea.be - Tel. (32) 2 738 73 55

This information is available on the ACEA website: <http://www.acea.be>

**PRESS EMBARGO FOR ALL DATA :**

**8.00 AM (6.00 AM GMT), 25 May 2016**

**PROVISIONAL**  
**EU+EFTA<sup>1</sup> COUNTRIES NEW REGISTRATION FIGURES BY MARKET**  
**TOTAL NEW COMMERCIAL VEHICLES<sup>2</sup>**

25/05/16

	April '16	April '15	% Change	Jan-Apr '16	Jan-Apr '15	% Change
AUSTRIA	4,243	3,988	6.4%	15,344	13,488	13.8%
BELGIUM	7,089	7,103	-0.2%	28,578	26,514	7.8%
BULGARIA <sup>3</sup>	369	320	15.3%	1,526	1,436	6.3%
CROATIA	824	743	10.9%	2,959	2,462	20.2%
CYPRUS <sup>4</sup>	112	100	12.0%	515	356	44.7%
CZECH REPUBLIC	2,765	2,474	11.8%	9,882	9,156	7.9%
DENMARK	3,664	3,130	17.1%	13,899	11,952	16.3%
ESTONIA	465	406	14.5%	1,773	1,664	6.6%
FINLAND	1,503	1,237	21.5%	5,603	4,872	15.0%
FRANCE	41,094	37,486	9.6%	154,061	139,967	10.1%
GERMANY	31,919	28,422	12.3%	113,632	103,259	10.0%
GREECE	597	609	-2.0%	1,842	2,641	-30.3%
HUNGARY	2,298	1,743	31.8%	8,409	7,467	12.6%
IRELAND	2,619	2,306	13.6%	17,101	13,034	31.2%
ITALY <sup>5</sup>	16,212	12,232	32.5%	60,919	47,157	29.2%
LATVIA	305	416	-26.7%	1,187	1,309	-9.3%
LITHUANIA	577	432	33.6%	2,823	1,803	56.6%
LUXEMBOURG	496	439	13.0%	2,051	1,703	20.4%
NETHERLANDS	7,594	5,938	27.9%	34,043	26,945	26.3%
POLAND	7,801	6,000	30.0%	28,559	22,795	25.3%
PORTUGAL	2,933	2,668	9.9%	12,312	10,305	19.5%
ROMANIA	1,935	1,346	43.8%	7,354	5,030	46.2%
SLOVAKIA	1,152	1,049	9.8%	4,131	3,722	11.0%
SLOVENIA	1,054	817	29.0%	4,246	3,015	40.8%
SPAIN	17,457	14,605	19.5%	62,815	55,614	12.9%
SWEDEN	5,492	4,996	9.9%	18,705	16,431	13.8%
UNITED KINGDOM	32,444	29,174	11.2%	144,297	138,603	4.1%
<b>EUROPEAN UNION</b>	<b>195,013</b>	<b>170,179</b>	<b>14.6%</b>	<b>758,566</b>	<b>672,700</b>	<b>12.8%</b>
EU15	175,356	154,333	13.6%	685,202	612,485	11.9%
EU12	19,657	15,846	24.1%	73,364	60,215	21.8%
ICELAND	260	165	57.6%	793	506	56.7%
NORWAY	3,775	3,402	11.0%	12,331	12,372	-0.3%
SWITZERLAND	3,292	3,012	9.3%	11,913	11,776	1.2%
EFTA	7,327	6,579	11.4%	25,037	24,654	1.6%
<b>EU+EFTA</b>	<b>202,340</b>	<b>176,758</b>	<b>14.5%</b>	<b>783,603</b>	<b>697,354</b>	<b>12.4%</b>
<b>WESTERN EUROPE (EU15+EFTA)</b>	<b>182,683</b>	<b>160,912</b>	<b>13.5%</b>	<b>710,239</b>	<b>637,139</b>	<b>11.5%</b>

SOURCE: NATIONAL AUTOMOBILE MANUFACTURERS' ASSOCIATIONS

<sup>1</sup> Data for Malta unavailable

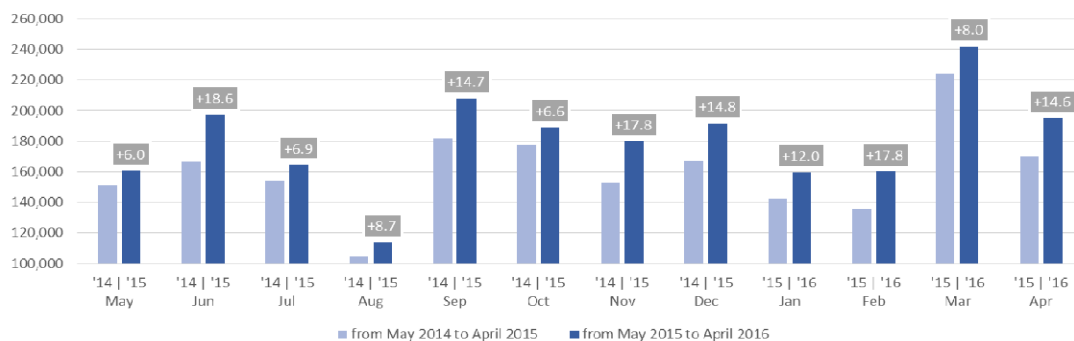
<sup>4</sup> Data for Buses & Coaches unavailable

<sup>2</sup> Total Light, Medium & Heavy Commercial Vehicles and Buses & Coaches

<sup>5</sup> ANFIA estimates based on vehicle registration certificates issued by the Italian Ministry of Transport

<sup>3</sup> Data for Medium & Heavy Commercial Vehicles and Buses & Coaches unavailable

Total new commercial vehicle registrations in the EU - 12 month trend



For further information, please contact: Ms Francesca Piazza - Statistics Manager - E-mail: fp@acea.be - Tel. (32) 2 738 73 55

This information is available on the ACEA website: <http://www.acea.be>