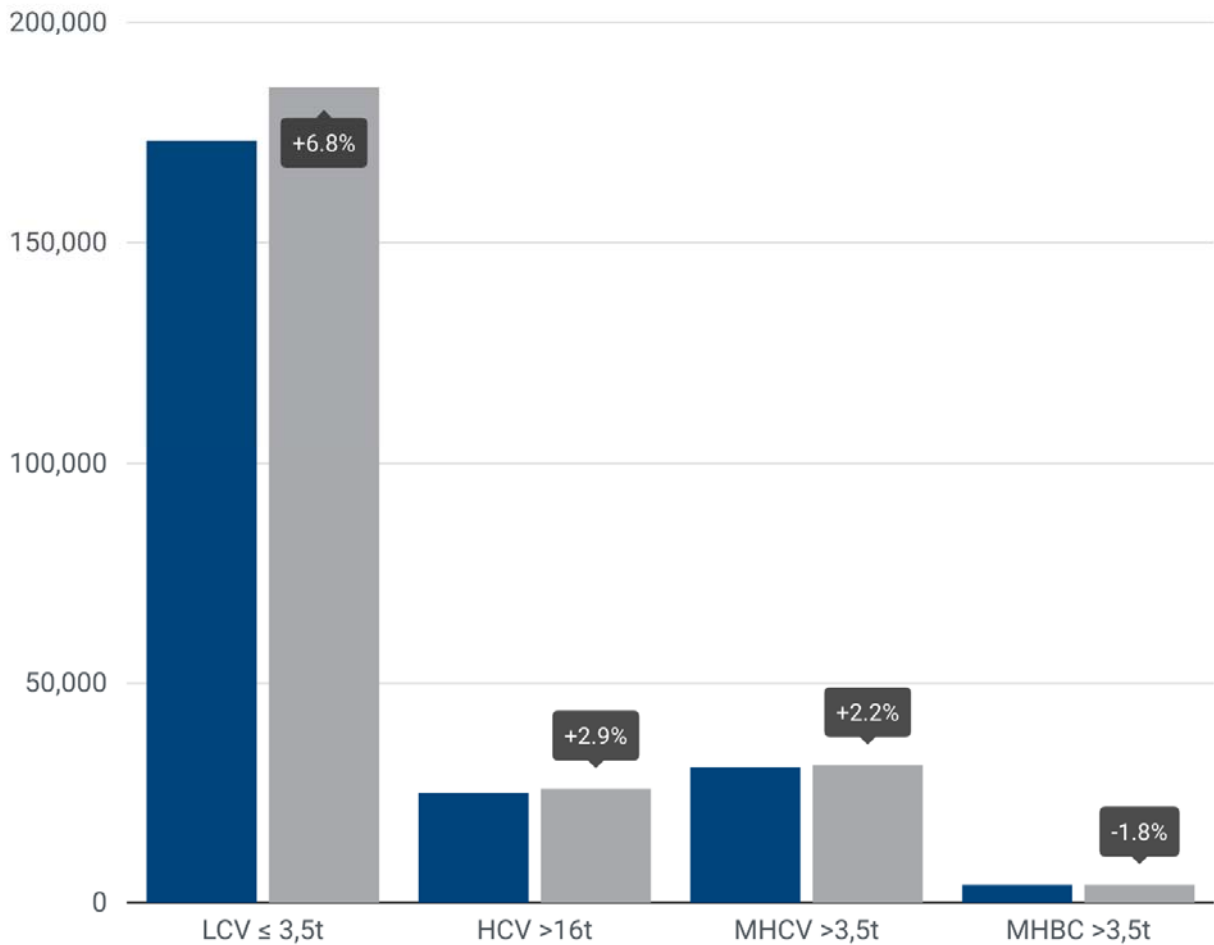


**PRESS EMBARGO: 8.00 AM (6.00 AM GMT), 21 October 2016**

**NEW COMMERCIAL VEHICLE REGISTRATIONS  
EUROPEAN UNION<sup>1</sup>  
September 2016**

■ September 2015    ■ September 2016



**Next press release: Friday 25 November 2016**

<sup>1</sup> Data for Malta unavailable

## Commercial vehicle registrations: +13.1% over nine months; +6.0% in September

### Total new commercial vehicles

**In September 2016**, demand for new commercial vehicles in the EU continued to grow (+6.0%), even if at a more modest rate than the previous month. This marked the 21<sup>st</sup> consecutive month of growth, with a total of 220,781 new vehicles registered. Growth continued to be driven by the Italian (+46.3%) and Spanish (+14.1%) markets, while France (-1.1%) and the United Kingdom (-0.9%) performed less well than in September 2015.

**Over the first nine months of 2016**, the EU market expanded by 13.1%, totalling about 1.7 million commercial vehicles. During that period, Italy (+40.2%), Spain (+13.1%), Germany (+11.3%), France (+10.1%) and the United Kingdom (+2.0%) all posted growth.

### New light commercial vehicles (LCV) up to 3.5 tonnes<sup>2</sup>

**In September 2016** registrations of new vans totalled 185,415 units, up (+6.8%) compared to September 2015, marking the 37<sup>th</sup> consecutive month of growth in the segment. Demand was mostly supported by Italy (+46.3%) and Spain (+12.2%), followed by Germany (+5.6%) and the UK (+1.9%). The French market, on the other hand, saw a decline (-2.1%) last month.

**From January to September 2016**, 1,422,657 new light commercial vehicles were registered in the EU, or 13.5% more than in the same period last year. Italy (+41.5%), Spain (+13.0%), Germany (+12.9%), France (+9.8%) and the United Kingdom (+2.7%) all contributed to this positive upturn over the first nine months of 2016.

### New heavy commercial vehicles (HCV) over 16 tonnes<sup>3</sup>

**September 2016** new heavy truck registrations recorded a modest increase (+2.9%) compared to September last year, totalling 25,889 units. Italy (+37.6%) and Spain (+21.9%) largely contributed to the growth, followed by France (+10.8%) and Germany (+5.6%). Demand for heavy trucks in the United Kingdom dropped significantly (-34.2%).

**Nine months into the year**, demand for new heavy trucks continued to increase (+14.1%), with 215,495 new vehicles being registered in the EU. Italy (+37.4%), France (+16.2%), Spain (+10.3%) and Germany (+8.0%) made a positive contribution to the overall upturn, while the UK market registered a slight decline (-2.5%).

### New medium and heavy commercial vehicles (MHCV) over 3.5 tonnes<sup>4</sup>

**In September 2016**, new truck registrations in the EU were up again after the decline observed in July. Overall, 31,432 new trucks were registered, 2.2% more compared to September last year. Among the major markets, results for trucks were similar to those of the heavy truck segment, with Italy (+50.9%), Spain (+21.4%) and France (+10.5%) showing the highest increases and the United Kingdom posting a decline (-30.9%).

**From January to September 2016**, 265,533 new trucks (+12.8%) were registered in the EU. Italy (+37.2%), France (+15.5%) and Spain (+13.4%) made a particularly significant contribution to overall growth. Over those nine months, UK demand went down (-2.3%).

### New medium and heavy buses & coaches (MHBC) over 3.5 tonnes

**In September 2016**, new bus and coach registrations declined for the fourth consecutive month (-1.8%), totalling 3,934 units. Spain (+38.2%), Italy (+21.4%), Germany (+13.8%) and the UK (+11.3%) all posted double-digit increases, but France (-17.9%) performed less well than in September 2015.

**Over the first nine months of 2016**, the EU market for buses and coaches remained fairly stable (+0.5%), totalling 29,047 new vehicles registered. Demand was primarily driven by Spain (+16.7%) and Germany (+14.4%), while France (-4.2%), the UK (-3.5%) and Italy (-3.2%) saw demand decline over this period.

---

<sup>2</sup> Including light buses and coaches

<sup>3</sup> Excluding heavy buses and coaches

<sup>4</sup> Excluding buses and coaches

# P R E S S R E L E A S E

**PRESS EMBARGO FOR ALL DATA :**

**8.00 AM (6.00 AM GMT), 21 October 2016**

## PROVISIONAL

EU+EFTA<sup>1</sup> COUNTRIES NEW REGISTRATION FIGURES BY MARKET  
NEW LIGHT COMMERCIAL VEHICLES up to 3.5t<sup>2</sup>

21/10/16

	September '16	September '15	% Change	Jan-Sep '16	Jan-Sep '15	% Change
AUSTRIA	2,870	2,989	-4.0%	27,671	24,545	12.7%
BELGIUM	5,372	4,509	19.1%	52,796	47,230	11.8%
BULGARIA	366	411	-10.9%	3,386	3,321	2.0%
CROATIA	612	535	14.4%	6,251	4,932	26.7%
CYPRUS	180	209	-13.9%	1,392	1,046	33.1%
CZECH REPUBLIC	1,634	1,256	30.1%	14,185	11,762	20.6%
DENMARK	2,703	2,720	-0.6%	27,866	23,435	18.9%
ESTONIA	319	364	-12.4%	3,035	2,760	10.0%
FINLAND	1,169	957	22.2%	9,946	8,486	17.2%
FRANCE	35,326	36,077	-2.1%	298,744	272,148	9.8%
GERMANY	20,276	19,196	5.6%	189,795	168,100	12.9%
GREECE	394	364	8.2%	4,208	4,193	0.4%
HUNGARY	1,661	1,313	26.5%	15,468	11,769	31.4%
IRELAND	1,628	1,582	2.9%	26,165	21,770	20.2%
ITALY	16,460	11,249	46.3%	130,592	92,306	41.5%
LATVIA	186	171	8.8%	1,604	1,709	-6.1%
LITHUANIA	240	192	25.0%	2,196	1,695	29.6%
LUXEMBOURG	276	281	-1.8%	3,269	2,769	18.1%
NETHERLANDS	5,296	4,804	10.2%	55,450	45,014	23.2%
POLAND	4,732	4,762	-0.6%	44,375	36,969	20.0%
PORTUGAL	2,984	2,557	16.7%	24,599	21,327	15.3%
ROMANIA	1,488	972	53.1%	10,380	7,681	35.1%
SLOVAKIA	425	639	-33.5%	5,646	4,914	14.9%
SLOVENIA	778	617	26.1%	7,100	5,281	34.4%
SPAIN	13,529	12,063	12.2%	126,692	112,162	13.0%
SWEDEN	4,654	4,054	14.8%	38,132	32,234	18.3%
UNITED KINGDOM	59,857	58,744	1.9%	291,714	284,161	2.7%
<b>EUROPEAN UNION</b>	<b>185,415</b>	<b>173,587</b>	<b>6.8%</b>	<b>1,422,657</b>	<b>1,253,719</b>	<b>13.5%</b>
EU15 <sup>3</sup>	172,794	162,146	6.6%	1,307,639	1,159,880	12.7%
EU12 <sup>4</sup>	12,621	11,441	10.3%	115,018	93,839	22.6%
ICELAND	118	105	12.4%	1,371	1,077	27.3%
NORWAY	2,843	2,450	16.0%	24,380	22,865	6.6%
SWITZERLAND	2,528	2,543	-0.6%	22,921	23,299	-1.6%
EFTA	5,489	5,098	7.7%	48,672	47,241	3.0%
<b>EU+EFTA</b>	<b>190,904</b>	<b>178,685</b>	<b>6.8%</b>	<b>1,471,329</b>	<b>1,300,960</b>	<b>13.1%</b>
<b>WESTERN EUROPE (EU15+EFTA)</b>	<b>178,283</b>	<b>167,244</b>	<b>6.6%</b>	<b>1,356,311</b>	<b>1,207,121</b>	<b>12.4%</b>

SOURCE: NATIONAL AUTOMOBILE MANUFACTURERS' ASSOCIATIONS

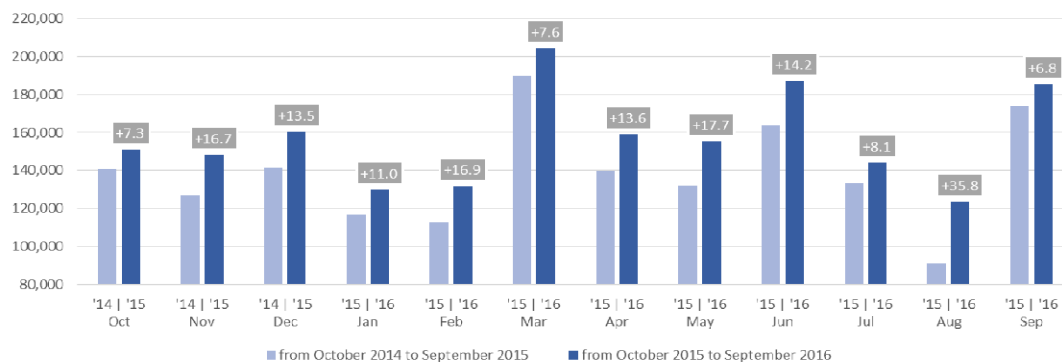
<sup>1</sup> Data for Malta unavailable

<sup>2</sup> Including Light Buses & Coaches

<sup>3</sup> Member States before the 2004 enlargement

<sup>4</sup> Member States having joined the EU since 2004

New light commercial vehicle registrations in the EU - 12 month trend



This information is available on the ACEA website: <http://www.acea.be>  
Next press release on Commercial Vehicles to be issued on Friday 25 November 2016

# P R E S S   R E L E A S E

**PRESS EMBARGO FOR ALL DATA :**

**8.00 AM (6.00 AM GMT), 21 October 2016**

## PROVISIONAL

### EU+EFTA<sup>1</sup> COUNTRIES NEW REGISTRATION FIGURES BY MARKET NEW HEAVY COMMERCIAL VEHICLES of 16t and over<sup>2</sup>

21/10/16

	September '16	September '15	% Change	Jan-Sep '16	Jan-Sep '15	% Change
AUSTRIA	629	584	7.7%	5,841	5,284	10.5%
BELGIUM	891	719	23.9%	6,472	5,344	21.1%
BULGARIA	N/A	N/A	N/A	N/A	N/A	N/A
CROATIA	64	65	-1.5%	827	602	37.4%
CYPRUS	3	2	50.0%	28	18	55.6%
CZECH REPUBLIC <sup>3</sup>	929	873	6.4%	6,990	6,259	11.7%
DENMARK	458	410	11.7%	3,388	3,202	5.8%
ESTONIA	94	81	16.0%	683	547	24.9%
FINLAND	227	183	24.0%	1,970	1,605	22.7%
FRANCE	3,853	3,478	10.8%	30,683	26,413	16.2%
GERMANY	5,471	5,179	5.6%	49,709	46,032	8.0%
GREECE	8	12	-33.3%	165	153	7.8%
HUNGARY	320	417	-23.3%	3,348	3,534	-5.3%
IRELAND <sup>4</sup>	159	122	30.3%	1,953	1,316	48.4%
ITALY <sup>5</sup>	1,270	923	37.6%	12,167	8,852	37.4%
LATVIA	123	90	36.7%	1,105	942	17.3%
LITHUANIA <sup>4</sup>	565	574	-1.6%	4,808	2,712	77.3%
LUXEMBOURG <sup>4</sup>	115	101	13.9%	907	772	17.5%
NETHERLANDS	1,235	1,102	12.1%	11,141	9,658	15.4%
POLAND	2,311	2,061	12.1%	17,852	14,091	26.7%
PORTUGAL	429	354	21.2%	2,798	2,312	21.0%
ROMANIA	550	476	15.5%	5,504	3,911	40.7%
SLOVAKIA	369	435	-15.2%	3,124	3,089	1.1%
SLOVENIA <sup>4</sup>	199	140	42.1%	1,626	1,231	32.1%
SPAIN	1,871	1,535	21.9%	13,670	12,390	10.3%
SWEDEN	581	444	30.9%	4,177	3,384	23.4%
UNITED KINGDOM <sup>4</sup>	3,165	4,811	-34.2%	24,559	25,198	-2.5%
<b>EUROPEAN UNION</b>	<b>25,889</b>	<b>25,171</b>	<b>2.9%</b>	<b>215,495</b>	<b>188,851</b>	<b>14.1%</b>
EU15	20,362	19,957	2.0%	169,600	151,915	11.6%
EU12	5,527	5,214	6.0%	45,895	36,936	24.3%
ICELAND	3	14	-78.6%	111	93	19.4%
NORWAY <sup>4</sup>	429	363	18.2%	3,280	2,967	10.5%
SWITZERLAND <sup>3</sup>	243	251	-3.2%	2,470	2,399	3.0%
EFTA	675	628	7.5%	5,861	5,459	7.4%
<b>EU+EFTA</b>	<b>26,564</b>	<b>25,799</b>	<b>3.0%</b>	<b>221,356</b>	<b>194,310</b>	<b>13.9%</b>
<b>WESTERN EUROPE (EU15+EFTA)</b>	<b>21,037</b>	<b>20,585</b>	<b>2.2%</b>	<b>175,461</b>	<b>157,374</b>	<b>11.5%</b>

SOURCE: NATIONAL AUTOMOBILE MANUFACTURERS' ASSOCIATIONS

<sup>1</sup> Data for Malta unavailable

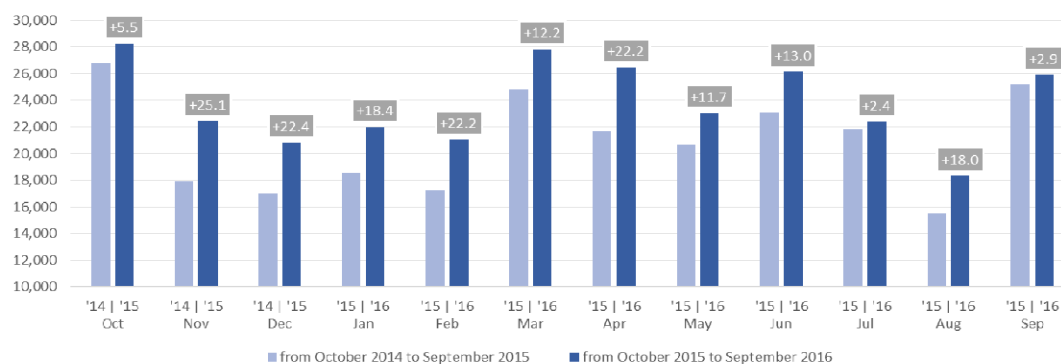
<sup>4</sup> Estimates

<sup>2</sup> Excluding Heavy Buses & Coaches

<sup>5</sup> ANFIA estimates based on vehicle registration certificates issued by the Italian Ministry of Transport

<sup>3</sup> Heavy Commercial Vehicles of 18t and over

### New heavy commercial vehicle registrations in the EU - 12 month trend



This information is available on the ACEA website: <http://www.acea.be>

# P R E S S   R E L E A S E

**PRESS EMBARGO FOR ALL DATA :**

**8.00 AM (6.00 AM GMT), 21 October 2016**

## PROVISIONAL

EU+EFTA<sup>1</sup> COUNTRIES NEW REGISTRATION FIGURES BY MARKET  
NEW MEDIUM & HEAVY COMMERCIAL VEHICLES over 3.5t<sup>2</sup>

21/10/16

	September '16	September '15	% Change	Jan-Sep '16	Jan-Sep '15	% Change
AUSTRIA	680	641	6.1%	6,278	5,699	10.2%
BELGIUM	1,003	825	21.6%	7,607	6,545	16.2%
BULGARIA	N/A	N/A	N/A	N/A	N/A	N/A
CROATIA	72	73	-1.4%	1,065	809	31.6%
CYPRUS	8	2	300.0%	42	36	16.7%
CZECH REPUBLIC	1,048	1,032	1.6%	8,346	7,518	11.0%
DENMARK	496	443	12.0%	3,780	3,514	7.6%
ESTONIA	97	85	14.1%	711	592	20.1%
FINLAND	276	227	21.6%	2,490	2,026	22.9%
FRANCE	4,238	3,834	10.5%	35,609	30,842	15.5%
GERMANY	7,997	7,735	3.4%	70,486	65,932	6.9%
GREECE	17	59	-71.2%	262	275	-4.7%
HUNGARY	349	454	-23.1%	3,658	3,838	-4.7%
IRELAND	189	162	16.7%	2,306	1,644	40.3%
ITALY <sup>3</sup>	1,738	1,152	50.9%	15,646	11,402	37.2%
LATVIA	123	93	32.3%	1,151	1,001	15.0%
LITHUANIA <sup>4</sup>	573	597	-4.0%	4,884	2,798	74.6%
LUXEMBOURG	125	108	15.7%	964	820	17.6%
NETHERLANDS	1,339	1,228	9.0%	12,291	10,748	14.4%
POLAND	2,506	2,266	10.6%	19,385	15,664	23.8%
PORTUGAL	480	392	22.4%	3,272	2,709	20.8%
ROMANIA	577	489	18.0%	5,781	4,101	41.0%
SLOVAKIA	390	467	-16.5%	3,490	3,335	4.6%
SLOVENIA <sup>4</sup>	209	154	35.7%	1,745	1,348	29.5%
SPAIN	2,119	1,745	21.4%	16,788	14,799	13.4%
SWEDEN	631	493	28.0%	4,577	3,806	20.3%
UNITED KINGDOM <sup>4</sup>	4,152	6,009	-30.9%	32,919	33,689	-2.3%
<b>EUROPEAN UNION</b>	<b>31,432</b>	<b>30,765</b>	<b>2.2%</b>	<b>265,533</b>	<b>235,490</b>	<b>12.8%</b>
EU15	25,480	25,053	1.7%	215,275	194,450	10.7%
EU12	5,952	5,712	4.2%	50,258	41,040	22.5%
ICELAND	13	21	-38.1%	219	162	35.2%
NORWAY	594	467	27.2%	4,537	4,049	12.1%
SWITZERLAND	317	319	-0.6%	3,204	3,040	5.4%
EFTA	924	807	14.5%	7,960	7,251	9.8%
<b>EU+EFTA</b>	<b>32,356</b>	<b>31,572</b>	<b>2.5%</b>	<b>273,493</b>	<b>242,741</b>	<b>12.7%</b>
<b>WESTERN EUROPE (EU15+EFTA)</b>	<b>26,404</b>	<b>25,860</b>	<b>2.1%</b>	<b>223,235</b>	<b>201,701</b>	<b>10.7%</b>

SOURCE: NATIONAL AUTOMOBILE MANUFACTURERS' ASSOCIATIONS

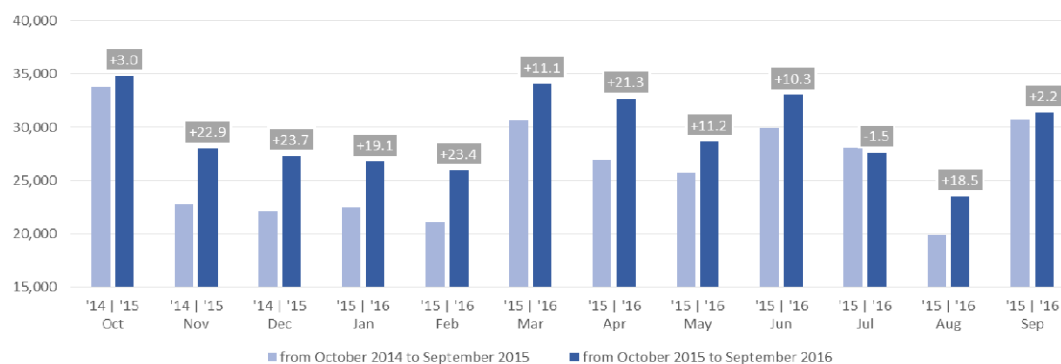
<sup>1</sup> Data for Malta unavailable

<sup>3</sup> ANFIA estimates based on vehicle registration certificates issued by the Italian Ministry of Transport

<sup>2</sup> Excluding total Buses & Coaches over 3.5t

<sup>4</sup> Estimates

### New medium and heavy commercial vehicle registrations in the EU - 12 month trend



For further information, please contact: Ms Francesca Piazza - Statistics Manager - E-mail: fp@acea.be - Tel. (32) 2 738 73 55

This information is available on the ACEA website: <http://www.acea.be>

# P R E S S   R E L E A S E

**PRESS EMBARGO FOR ALL DATA :**

**8.00 AM (6.00 AM GMT), 21 October 2016**

## PROVISIONAL

EU+EFTA<sup>1</sup> COUNTRIES NEW REGISTRATION FIGURES BY MARKET  
NEW MEDIUM & HEAVY BUSES & COACHES over 3.5t

	September '16	September '15	% Change	Jan-Sep '16	Jan-Sep '15	% Change
AUSTRIA	58	78	-25.6%	802	664	20.8%
BELGIUM	31	36	-13.9%	573	765	-25.1%
BULGARIA	N/A	N/A	N/A	N/A	N/A	N/A
CROATIA	21	9	133.3%	158	98	61.2%
CYPRUS	N/A	N/A	N/A	N/A	N/A	N/A
CZECH REPUBLIC	96	106	-9.4%	777	777	-7.9%
DENMARK	92	71	29.6%	498	316	57.6%
ESTONIA	8	23	-65.2%	157	179	-12.3%
FINLAND	27	46	-41.3%	455	431	5.6%
FRANCE	526	641	-17.9%	5,118	5,345	-4.2%
GERMANY	420	369	13.8%	4,509	3,940	14.4%
GREECE	10	7	42.9%	164	103	59.2%
HUNGARY	51	21	142.9%	314	274	14.6%
IRELAND	25	22	13.6%	342	266	28.6%
ITALY <sup>2</sup>	250	206	21.4%	1,848	1,909	-3.2%
LATVIA	36	8	350.0%	102	188	-45.7%
LITHUANIA <sup>3</sup>	12	22	-45.5%	221	168	31.5%
LUXEMBOURG	26	44	-40.9%	175	234	-25.2%
NETHERLANDS	31	13	138.5%	310	305	1.6%
POLAND	103	97	6.2%	1,434	1,212	18.3%
PORTUGAL	19	18	5.6%	285	219	30.1%
ROMANIA	107	545	-80.4%	864	1,823	-52.6%
SLOVAKIA	17	12	41.7%	264	206	28.2%
SLOVENIA <sup>3</sup>	9	19	-52.6%	156	123	26.8%
SPAIN	644	466	38.2%	2,358	2,020	16.7%
SWEDEN	141	71	98.6%	986	874	12.8%
UNITED KINGDOM <sup>3</sup>	1,174	1,055	11.3%	6,238	6,465	-3.5%
<b>EUROPEAN UNION</b>	<b>3,934</b>	<b>4,005</b>	<b>-1.8%</b>	<b>29,047</b>	<b>28,904</b>	<b>0.5%</b>
<b>EU15</b>	<b>3,474</b>	<b>3,143</b>	<b>10.5%</b>	<b>24,661</b>	<b>23,856</b>	<b>3.4%</b>
<b>EU12</b>	<b>460</b>	<b>862</b>	<b>-46.6%</b>	<b>4,386</b>	<b>5,048</b>	<b>-13.1%</b>
ICELAND	4	10	-60.0%	201	99	103.0%
NORWAY	45	36	25.0%	1,193	693	72.2%
SWITZERLAND	47	57	-17.5%	458	479	-4.4%
<b>EFTA</b>	<b>96</b>	<b>103</b>	<b>-6.8%</b>	<b>1,852</b>	<b>1,271</b>	<b>45.7%</b>
<b>EU+EFTA</b>	<b>4,030</b>	<b>4,108</b>	<b>-1.9%</b>	<b>30,899</b>	<b>30,175</b>	<b>2.4%</b>
<b>WESTERN EUROPE (EU15+EFTA)</b>	<b>3,570</b>	<b>3,246</b>	<b>10.0%</b>	<b>26,513</b>	<b>25,127</b>	<b>5.5%</b>

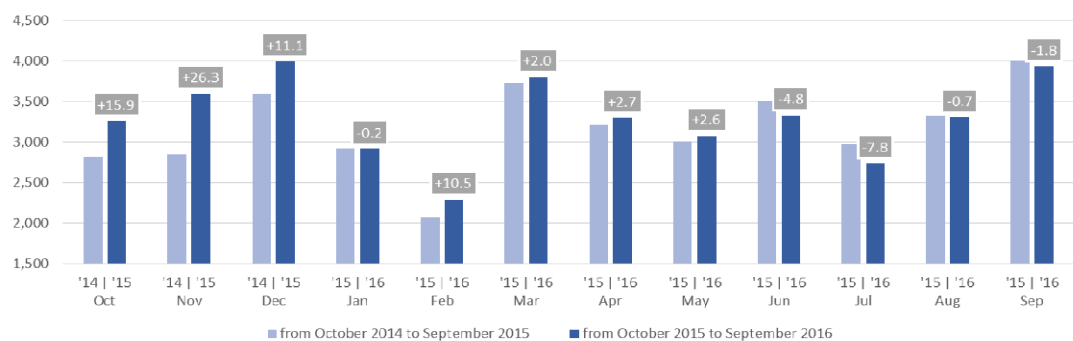
SOURCE: NATIONAL AUTOMOBILE MANUFACTURERS' ASSOCIATIONS

<sup>1</sup> Data for Malta unavailable

<sup>2</sup> ANFIA estimates based on vehicle registration certificates issued by the Italian Ministry of Transport

<sup>3</sup> Estimates

New medium and heavy buses & coaches registrations in the EU - 12 month trend



For further information, please contact: Ms Francesca Piazza - Statistics Manager - E-mail: fp@acea.be - Tel. (32) 2 738 73 55

This information is available on the ACEA website: <http://www.acea.be>

**PRESS EMBARGO FOR ALL DATA :**

**8.00 AM (6.00 AM GMT), 21 October 2016**

**PROVISIONAL**  
**EU+EFTA<sup>1</sup> COUNTRIES NEW REGISTRATION FIGURES BY MARKET**  
**TOTAL NEW COMMERCIAL VEHICLES<sup>2</sup>**

21/10/16

	September '16	September '15	% Change	Jan-Sep '16	Jan-Sep '15	% Change
AUSTRIA	3,608	3,708	-2.7%	34,751	30,908	12.4%
BELGIUM	6,406	5,370	19.3%	60,976	54,540	11.8%
BULGARIA <sup>3</sup>	366	411	-10.9%	3,386	3,321	2.0%
CROATIA	705	617	14.3%	7,474	5,839	28.0%
CYPRUS <sup>4</sup>	188	211	-10.9%	1,434	1,082	32.5%
CZECH REPUBLIC	2,778	2,394	16.0%	23,247	20,057	15.9%
DENMARK	3,291	3,234	1.8%	32,144	27,265	17.9%
ESTONIA	424	472	-10.2%	3,903	3,531	10.5%
FINLAND	1,472	1,230	19.7%	12,891	10,943	17.8%
FRANCE	40,090	40,552	-1.1%	339,471	308,335	10.1%
GERMANY	28,693	27,300	5.1%	264,790	237,972	11.3%
GREECE	421	430	-2.1%	4,634	4,571	1.4%
HUNGARY	2,061	1,788	15.3%	19,440	15,881	22.4%
IRELAND	1,842	1,766	4.3%	28,813	23,680	21.7%
ITALY <sup>5</sup>	18,448	12,607	46.3%	148,086	105,617	40.2%
LATVIA	345	272	26.8%	2,857	2,898	-1.4%
LITHUANIA	825	811	1.7%	7,301	4,661	56.6%
LUXEMBOURG	427	433	-1.4%	4,408	3,823	15.3%
NETHERLANDS	6,666	6,045	10.3%	68,051	56,067	21.4%
POLAND	7,341	7,125	3.0%	65,194	53,845	21.1%
PORTUGAL	3,483	2,967	17.4%	28,156	24,255	16.1%
ROMANIA	2,172	2,006	8.3%	17,025	13,605	25.1%
SLOVAKIA	832	1,118	-25.6%	9,400	8,455	11.2%
SLOVENIA	996	790	26.1%	9,001	6,752	33.3%
SPAIN	16,292	14,274	14.1%	145,838	128,981	13.1%
SWEDEN	5,426	4,618	17.5%	43,695	36,914	18.4%
UNITED KINGDOM	65,183	65,808	-0.9%	330,871	324,315	2.0%
<b>EUROPEAN UNION</b>	<b>220,781</b>	<b>208,357</b>	<b>6.0%</b>	<b>1,717,237</b>	<b>1,518,113</b>	<b>13.1%</b>
<b>EU15</b>	<b>201,748</b>	<b>190,342</b>	<b>6.0%</b>	<b>1,547,575</b>	<b>1,378,186</b>	<b>12.3%</b>
<b>EU12</b>	<b>19,033</b>	<b>18,015</b>	<b>5.7%</b>	<b>169,662</b>	<b>139,927</b>	<b>21.3%</b>
ICELAND	135	136	-0.7%	1,791	1,338	33.9%
NORWAY	3,482	2,953	17.9%	30,110	27,607	9.1%
SWITZERLAND	2,892	2,919	-0.9%	26,583	26,818	-0.9%
<b>EFTA</b>	<b>6,509</b>	<b>6,008</b>	<b>8.3%</b>	<b>58,484</b>	<b>55,763</b>	<b>4.9%</b>
<b>EU+EFTA</b>	<b>227,290</b>	<b>214,365</b>	<b>6.0%</b>	<b>1,775,721</b>	<b>1,573,876</b>	<b>12.8%</b>
<b>WESTERN EUROPE (EU15+EFTA)</b>	<b>208,257</b>	<b>196,350</b>	<b>6.1%</b>	<b>1,606,059</b>	<b>1,433,949</b>	<b>12.0%</b>

SOURCE: NATIONAL AUTOMOBILE MANUFACTURERS' ASSOCIATIONS

<sup>1</sup> Data for Malta unavailable

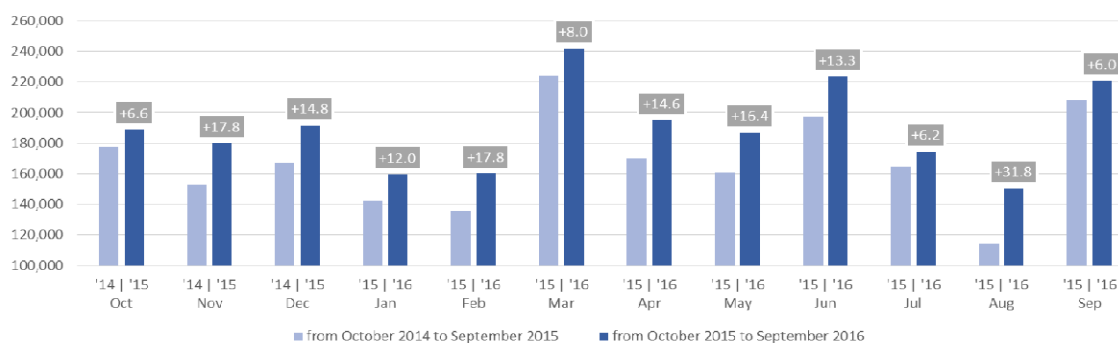
<sup>4</sup> Data for Buses & Coaches unavailable

<sup>2</sup> Total Light, Medium & Heavy Commercial Vehicles and Buses & Coaches

<sup>5</sup> ANFIA estimates based on vehicle registration certificates issued by the Italian Ministry of Transport

<sup>3</sup> Data for Medium & Heavy Commercial Vehicles and Buses & Coaches unavailable

Total new commercial vehicle registrations in the EU - 12 month trend



For further information, please contact: Ms Francesca Piazza - Statistics Manager - E-mail: fp@acea.be - Tel. (32) 2 738 73 55

This information is available on the ACEA website: <http://www.acea.be>